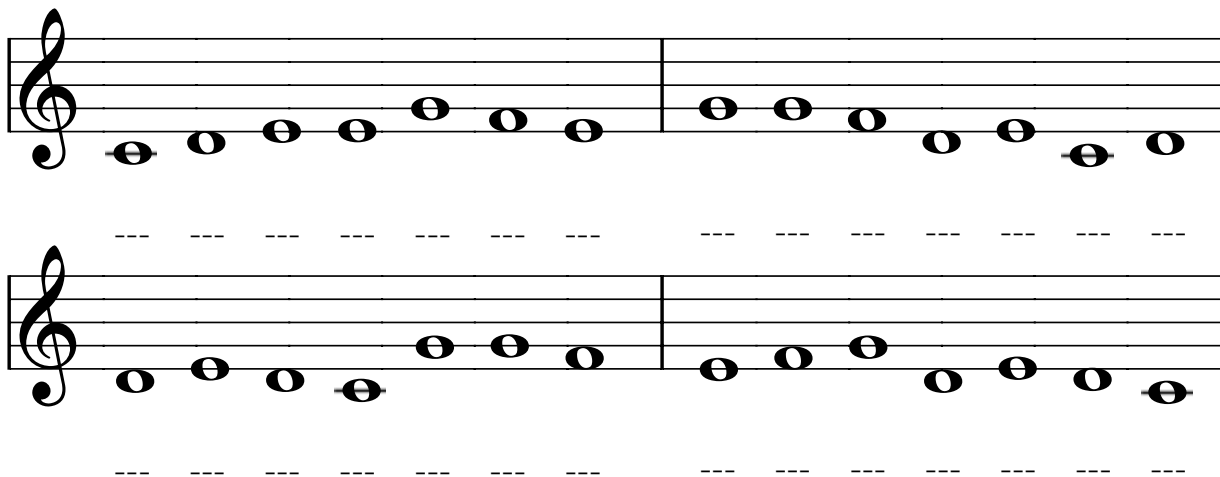


HEIKE WERNER-SCHOLZ

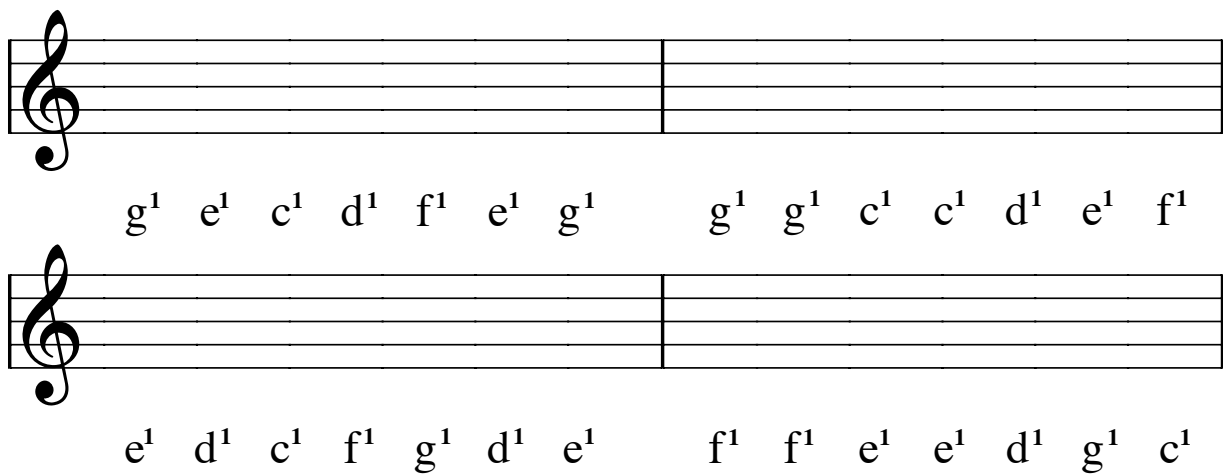


Der Notentrainer

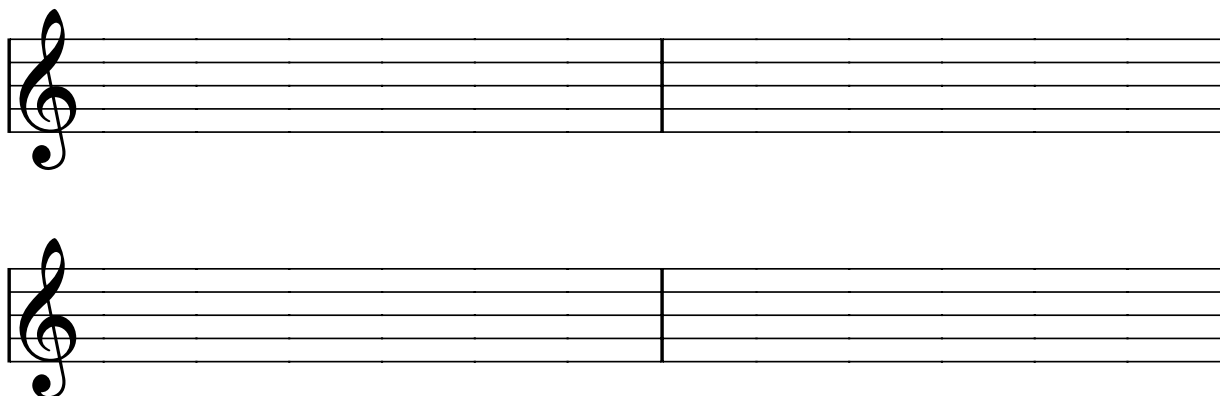
Training 1.1 bis 1.4 Notennamen schreiben:



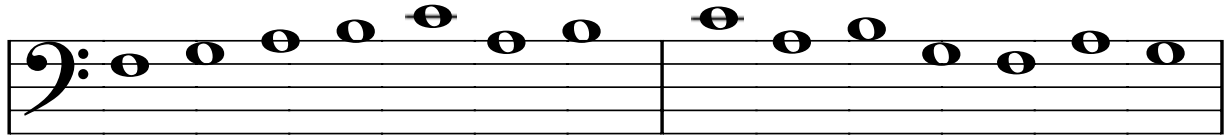
Training 1.5 bis 1.8 Noten schreiben:



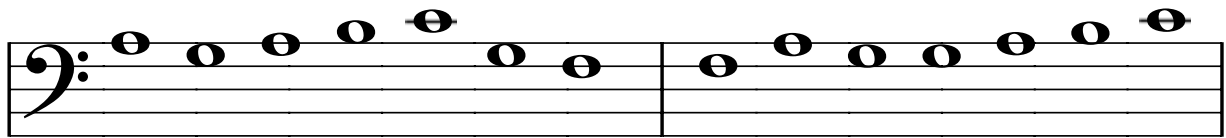
Training 1.9 bis 1.12 Melodien erfinden:



Training 2.1 bis 2.4 Notennamen schreiben:

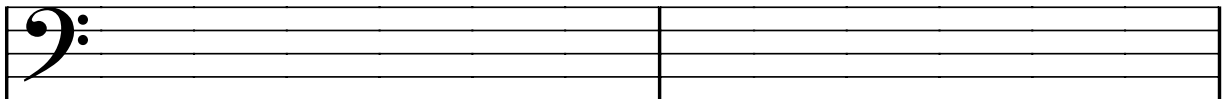


--- --- --- --- --- --- --- --- --- --- --- --- --- --- --- --- ---

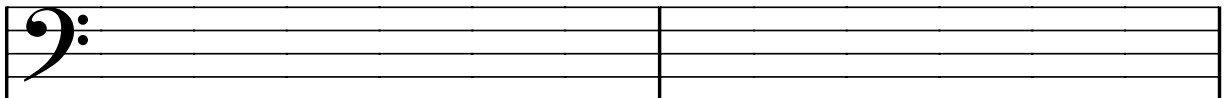


--- --- --- --- --- --- --- --- --- --- --- --- --- --- --- --- ---

Training 2.5 bis 2.8 Noten schreiben:

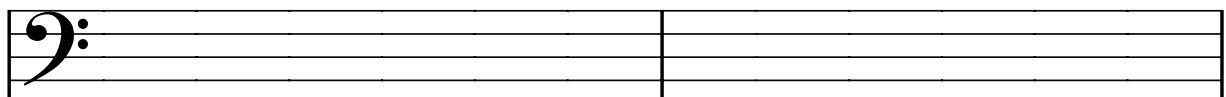


a f a c¹ g h a f g a a g c¹ h

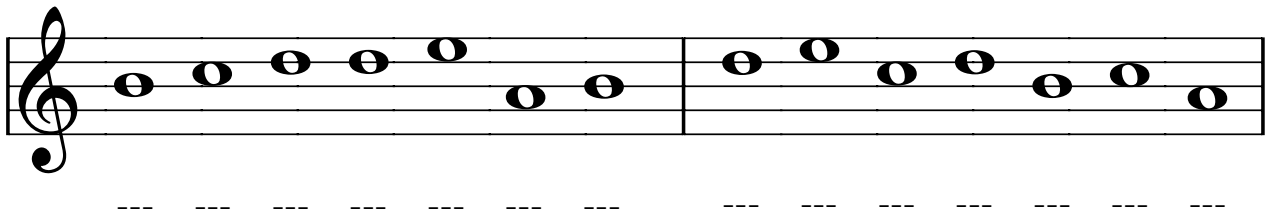
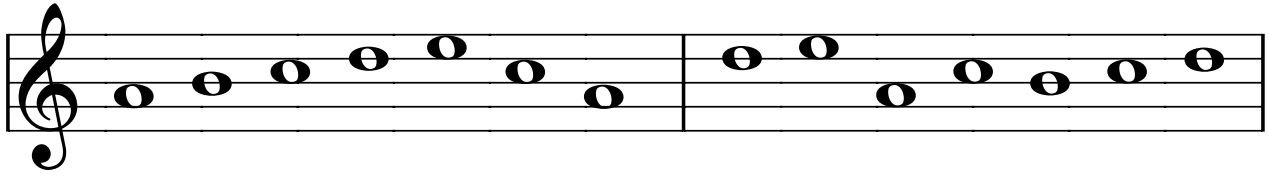


c¹ h a h a f g f a g c¹ c¹ h c¹

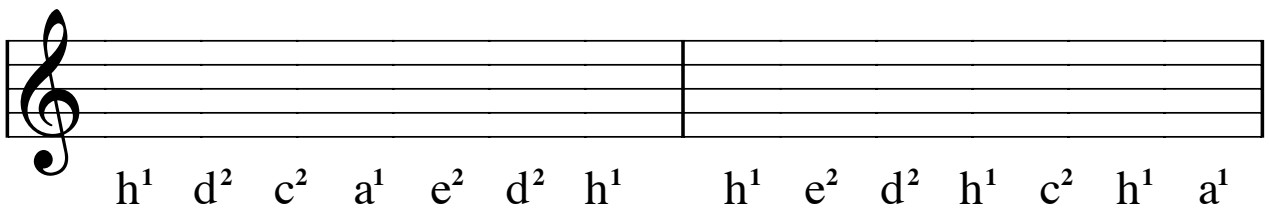
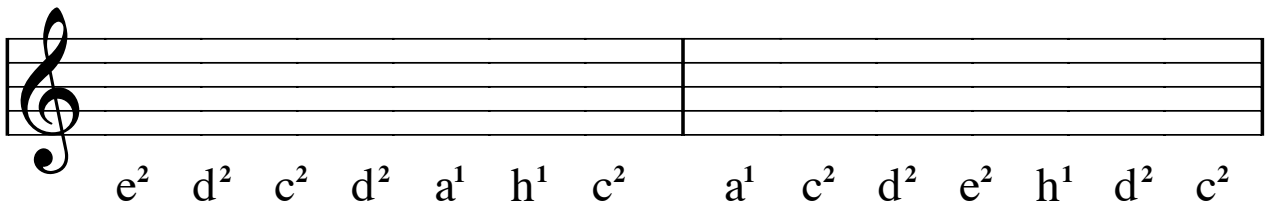
Training 2.9 bis 2.12 Melodien erfinden:



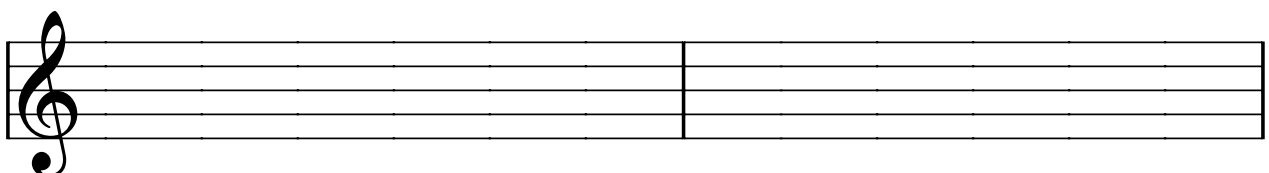
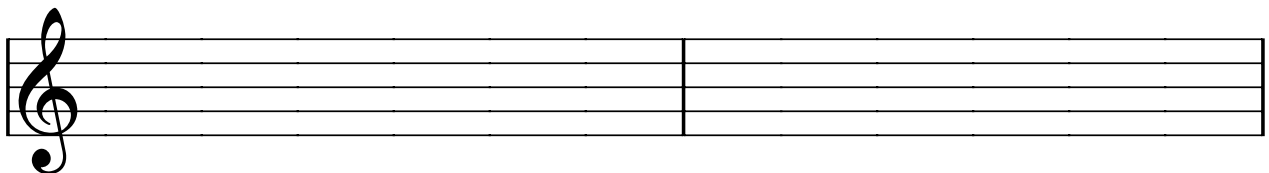
Training 3.1 bis 3.4 Notennamen schreiben:



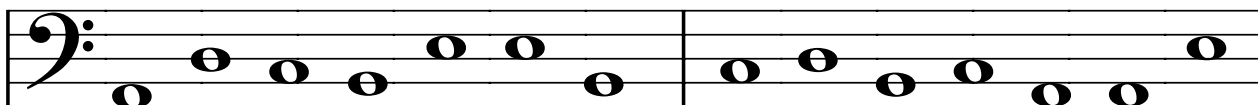
Training 3.5 bis 3.8 Noten schreiben:



Training 3.9 bis 3.12 Melodien erfinden:

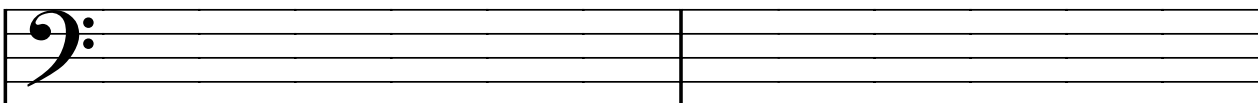


Training 4.1 bis 4.4 Notennamen schreiben:

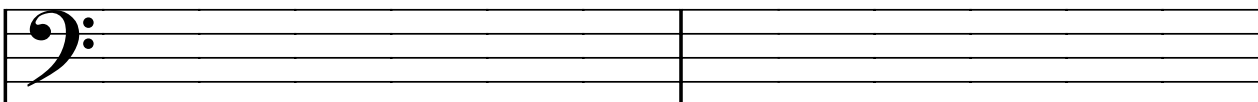




Training 4.5 bis 4.8 Noten schreiben:

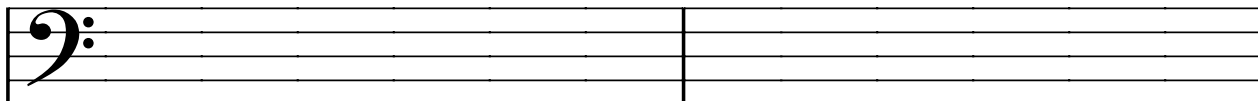
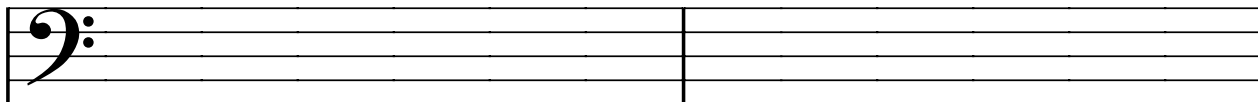


e A d c c A H d H c H A c e

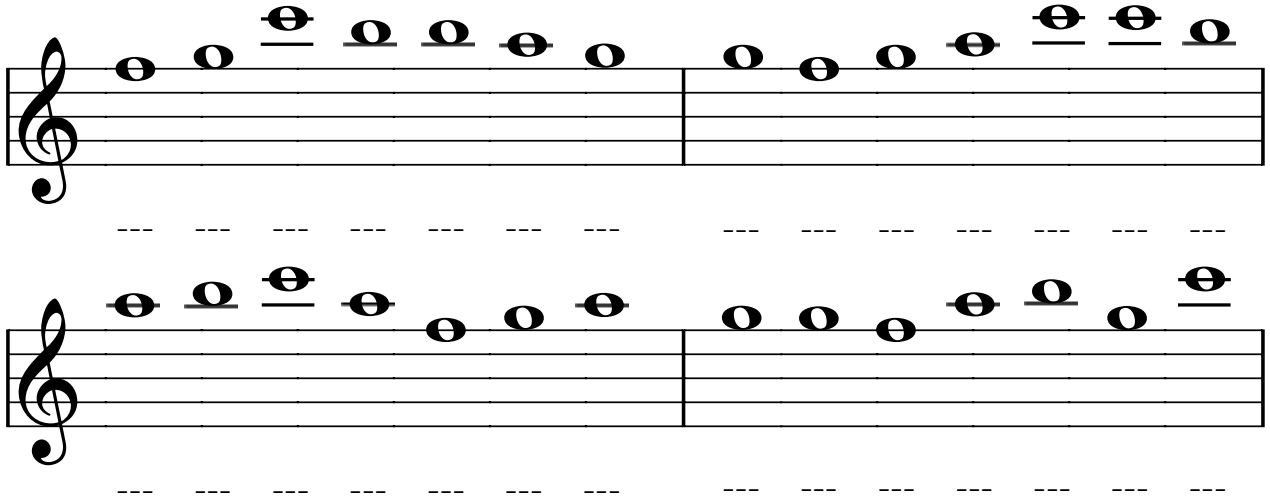


d e c A H d c e d d c H H A

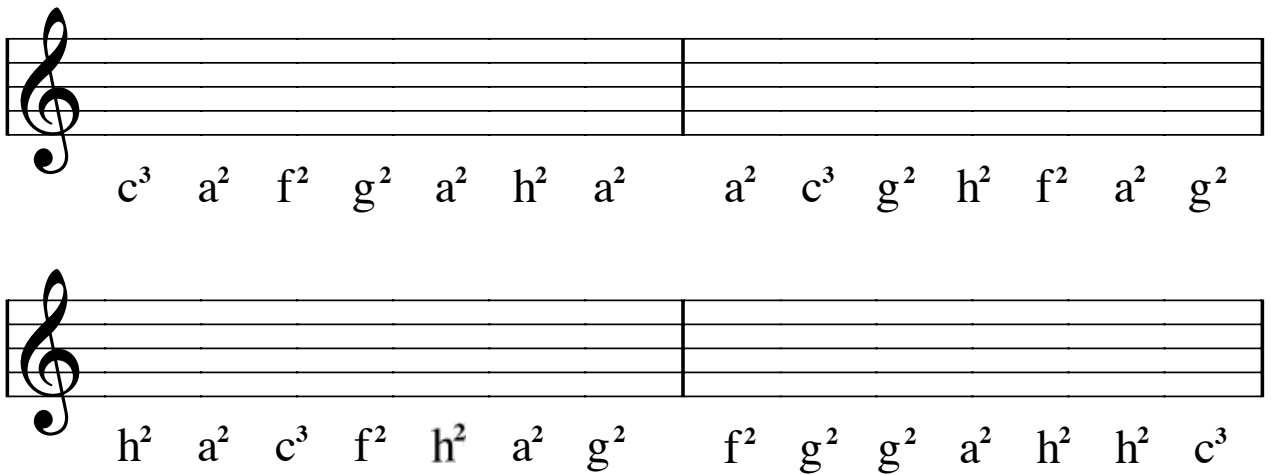
Training 4.9 bis 4.12 Melodien erfinden:



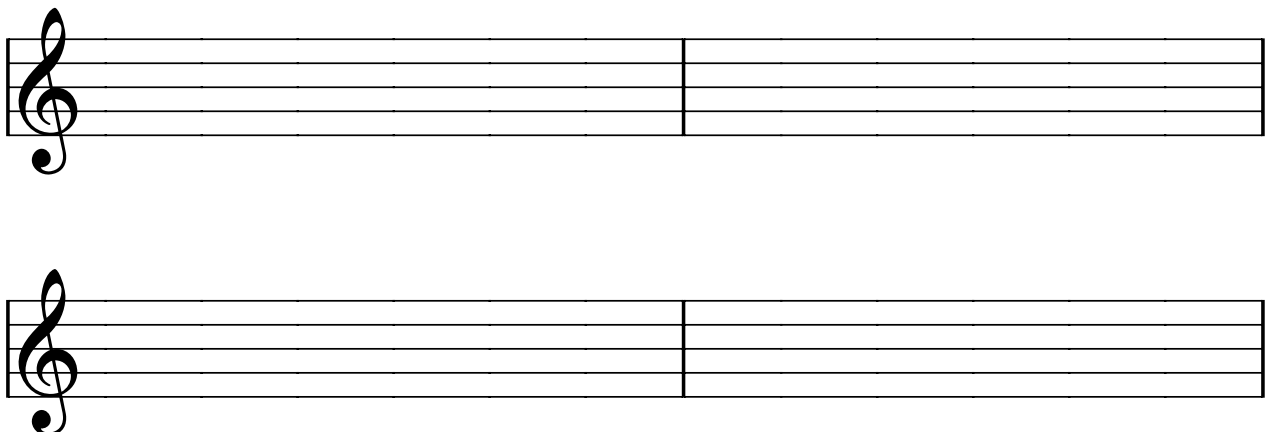
Training 5.1 bis 5.4 Notennamen schreiben:



Training 5.5 bis 5.8 Noten schreiben:



Training 5.9 bis 5.12 Melodien erfinden:



Training 6.1 bis 6.4 Notennamen schreiben:

Two musical staves in bass clef. The first staff contains the following notes: G, E, D, C, F, E, D, C, E, F, D, E, F, G. The second staff contains the following notes: F, E, D, C, C, G, F, D, D, F, E, D, G, C.

Training 6.5 bis 6.8 Noten schreiben:

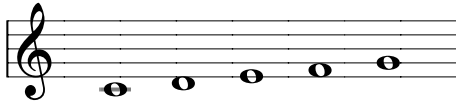
Two empty musical staves in bass clef. Below the first staff are the notes: G E D C F E D C E F D E F G. Below the second staff are the notes: F E D C C G F D D F E D G C.

Training 6.9 bis 6.12 Melodien erfinden:

Two empty musical staves in bass clef for creating melodies.

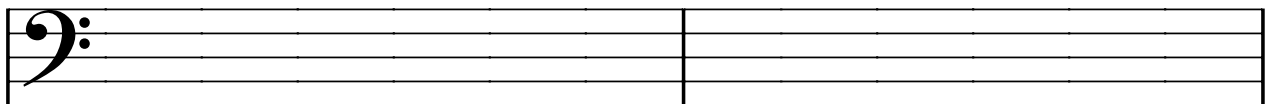
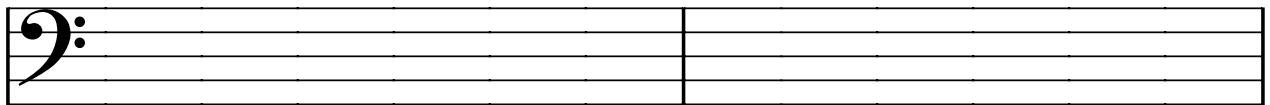
Training 7.1 bis 7.4 Noten transponieren:

1



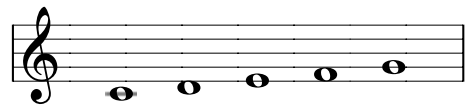
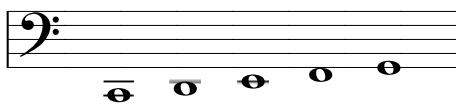
Noten von Training 1.1 bis 1.4
C-D-E-F-G (rot, rechte Hand)

Jetzt im Bass-Schlüssel notieren!
C-D-E-F-G (grün, linke Hand)



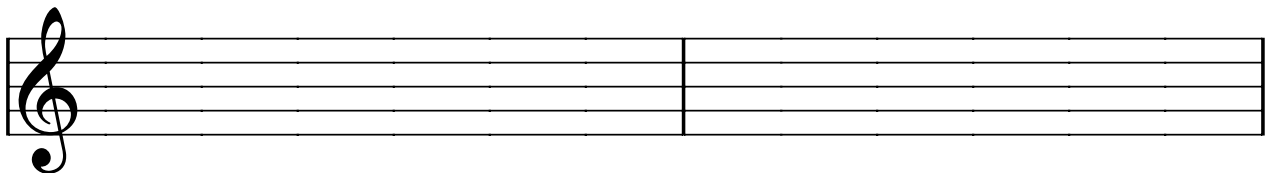
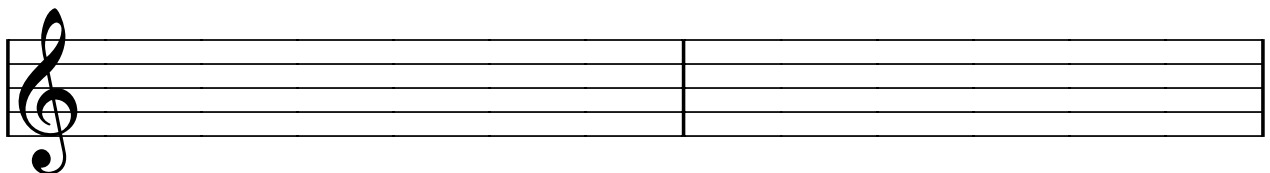
Training 7.5 bis 7.8 Noten transponieren:

6



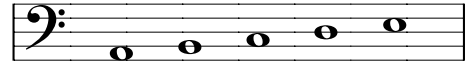
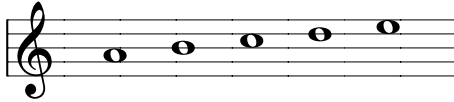
Noten von Training 6.1 bis 6.4
C-D-E-F-G (grün, linke Hand)

Jetzt im Violin-Schlüssel notieren!
C-D-E-F-G (rot, rechte Hand)



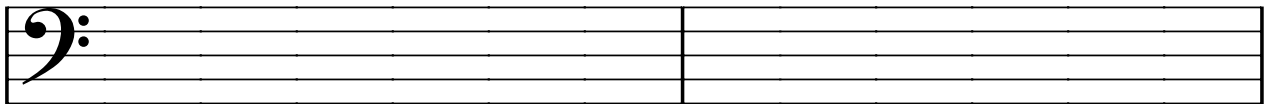
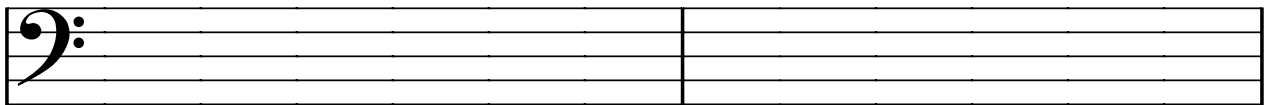
Training 8.1 bis 8.4 Noten transponieren:

3



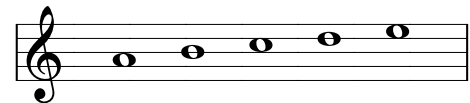
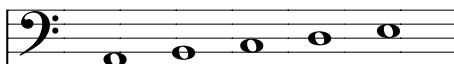
Noten von Training 3.1 bis 3.4
A-H-C-D-E (gelb, rechte Hand)

Jetzt im Bass-Schlüssel notieren!
A-H-C-D-E (gelb, linke Hand)



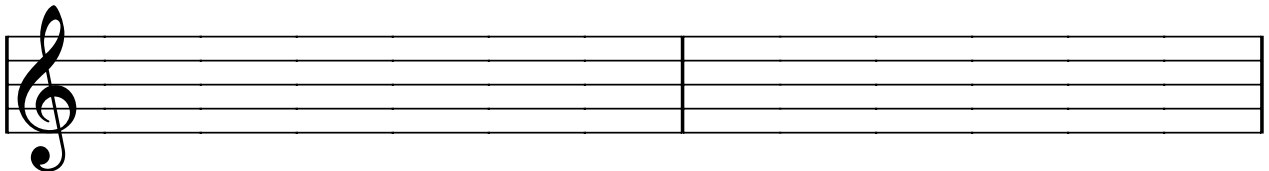
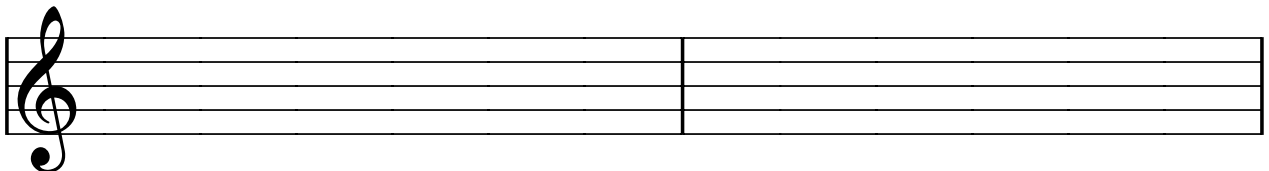
Training 8.5 bis 8.8 Noten transponieren:

4

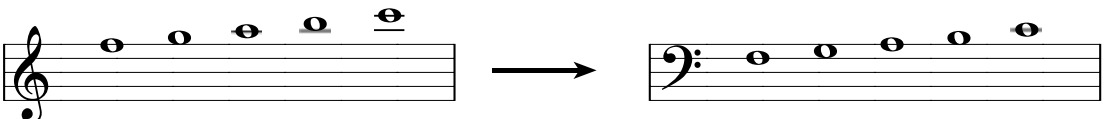


Noten von Training 4.1 bis 4.4
A-H-C-D-E (gelb, linke Hand)

Jetzt im Violin-Schlüssel notieren!
A-H-C-D-E (gelb, rechte Hand)

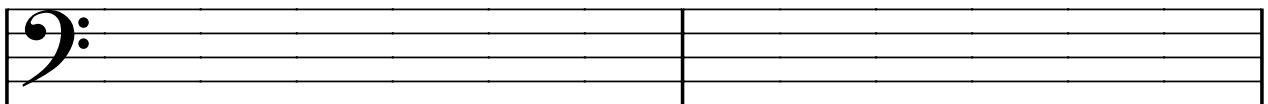
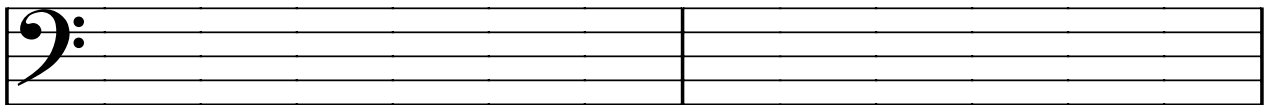


Training 9.1 bis 9.4 Noten transponieren:

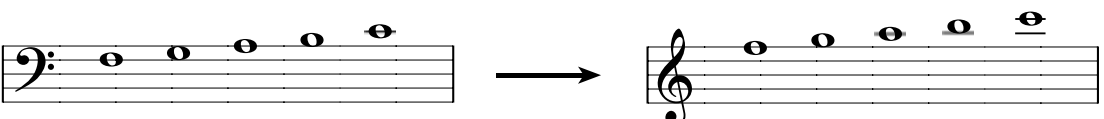
5  →

Noten von Training 5.1 bis 5.4
F-G-A-H-C (grün, rechte Hand)

Jetzt im Bass-Schlüssel notieren!
F-G-A-H-C (rot, linke Hand)

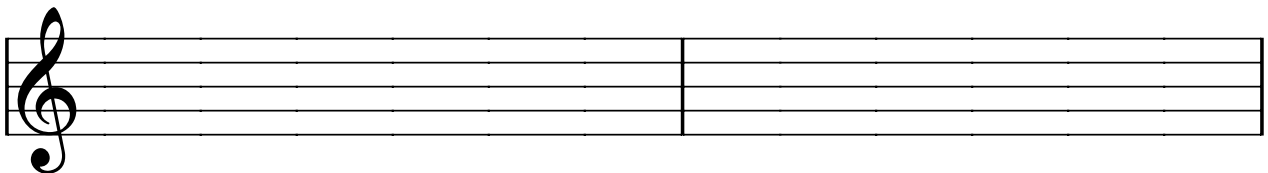
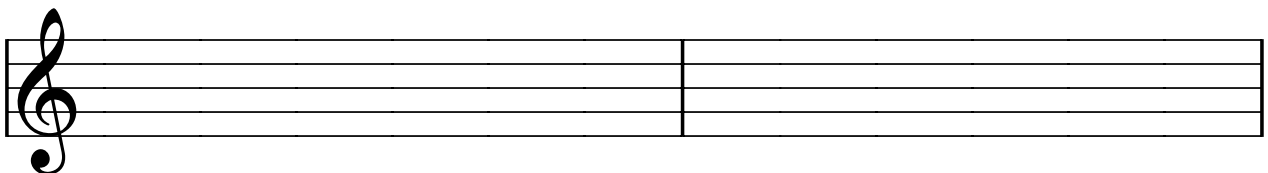


Training 9.5 bis 9.8 Noten transponieren:

2  →

Noten von Training 2.1 bis 2.4
F-G-A-H-C (rot, linke Hand)

Jetzt im Violin-Schlüssel notieren!
F-G-A-H-C (grün, rechte Hand)



1 1.1-1.4

<u>c</u> ¹	<u>d</u> ¹	<u>e</u> ¹	<u>e</u> ¹	<u>g</u> ¹	<u>f</u> ¹	<u>e</u> ¹	<u>g</u> ¹	<u>g</u> ¹	<u>f</u> ¹	<u>d</u> ¹	<u>e</u> ¹	<u>c</u> ¹	<u>d</u> ¹
<u>d</u> ¹	<u>e</u> ¹	<u>d</u> ¹	<u>c</u> ¹	<u>g</u> ¹	<u>g</u> ¹	<u>f</u> ¹	<u>e</u> ¹	<u>f</u> ¹	<u>g</u> ¹	<u>d</u> ¹	<u>e</u> ¹	<u>d</u> ¹	<u>c</u> ¹

1 1.5-1.8

2 2.1-2.4

<u>f</u>	<u>g</u>	<u>a</u>	<u>h</u>	<u>c</u> ¹	<u>a</u>	<u>h</u>	<u>c</u> ¹	<u>a</u>	<u>h</u>	<u>g</u>	<u>f</u>	<u>a</u>	<u>g</u>
<u>a</u>	<u>g</u>	<u>a</u>	<u>h</u>	<u>c</u> ¹	<u>g</u>	<u>f</u>	<u>f</u>	<u>a</u>	<u>g</u>	<u>g</u>	<u>a</u>	<u>h</u>	<u>c</u> ¹

2 2.5-2.8

3 3.1-3.4

<u>a</u> ¹	<u>h</u> ¹	<u>c</u> ²	<u>d</u> ²	<u>e</u> ²	<u>c</u> ²	<u>a</u> ¹	<u>d</u> ²	<u>e</u> ²	<u>a</u> ¹	<u>c</u> ²	<u>h</u> ¹	<u>c</u> ²	<u>d</u> ²
<u>h</u> ¹	<u>c</u> ²	<u>d</u> ²	<u>d</u> ²	<u>e</u> ²	<u>a</u> ¹	<u>h</u> ¹	<u>d</u> ²	<u>e</u> ²	<u>c</u> ²	<u>d</u> ²	<u>h</u> ¹	<u>c</u> ²	<u>a</u> ¹

3 3.5-3.8

4 4.1-4.4

<u>A</u> <u>d</u> <u>c</u> <u>H</u> <u>e</u> <u>e</u> <u>H</u>	<u>c</u> <u>d</u> <u>H</u> <u>c</u> <u>A</u> <u>A</u> <u>e</u>
--	--

<u>A</u> <u>H</u> <u>e</u> <u>e</u> <u>H</u> <u>c</u> <u>d</u>	<u>e</u> <u>c</u> <u>c</u> <u>d</u> <u>H</u> <u>e</u> <u>A</u>
--	--

4 4.5-4.8

5 5.1-5.4

<u>f</u> ² <u>g</u> ² <u>c</u> ³ <u>h</u> ² <u>h</u> ² <u>a</u> ² <u>g</u> ²	<u>g</u> ² <u>f</u> ² <u>g</u> ² <u>a</u> ² <u>c</u> ³ <u>c</u> ³ <u>h</u> ²
---	---

<u>a</u> ² <u>h</u> ² <u>c</u> ³ <u>a</u> ² <u>f</u> ² <u>g</u> ² <u>a</u> ²	<u>g</u> ² <u>g</u> ² <u>f</u> ² <u>a</u> ² <u>h</u> ² <u>g</u> ² <u>c</u> ³
---	---

5 5.5-5.8

6 6.1-6.4

<u>C</u> <u>E</u> <u>G</u> <u>F</u> <u>D</u> <u>F</u> <u>E</u>	<u>D</u> <u>F</u> <u>E</u> <u>C</u> <u>D</u> <u>D</u> <u>G</u>
--	--

<u>E</u> <u>E</u> <u>G</u> <u>D</u> <u>C</u> <u>C</u> <u>F</u>	<u>G</u> <u>E</u> <u>D</u> <u>F</u> <u>E</u> <u>D</u> <u>C</u>
--	--

6 6.5-6.8

7 7.1-7.4

Exercise 7.1-7.4 consists of two staves in bass clef. The first staff contains a sequence of notes: G2, A2, B2, C3, D3, E3, F3, G3. The second staff contains a sequence of notes: F3, E3, D3, C3, B2, A2, G2, F2.

7 7.5-7.8

Exercise 7.5-7.8 consists of two staves in treble clef. The first staff contains a sequence of notes: G4, A4, B4, C5, D5, E5, F5, G5. The second staff contains a sequence of notes: F5, E5, D5, C5, B4, A4, G4, F4.

8 8.1-8.4

Exercise 8.1-8.4 consists of two staves in bass clef. The first staff contains a sequence of notes: G2, A2, B2, C3, D3, E3, F3, G3. The second staff contains a sequence of notes: F3, E3, D3, C3, B2, A2, G2, F2.

8 8.5-8.8

Exercise 8.5-8.8 consists of two staves in treble clef. The first staff contains a sequence of notes: G4, A4, B4, C5, D5, E5, F5, G5. The second staff contains a sequence of notes: F5, E5, D5, C5, B4, A4, G4, F4.

9 9.1-9.4

Exercise 9.1-9.4 consists of two staves in bass clef. The first staff contains a sequence of notes: G2, A2, B2, C3, D3, E3, F3, G3. The second staff contains a sequence of notes: F3, E3, D3, C3, B2, A2, G2, F2.

9 9.5-9.8

Exercise 9.5-9.8 consists of two staves in treble clef. The first staff contains a sequence of notes: G4, A4, B4, C5, D5, E5, F5, G5. The second staff contains a sequence of notes: F5, E5, D5, C5, B4, A4, G4, F4.